



ASHOK LEYLAND

Koi Manzil Door Nahin

PAYLOAD KA  
BAAP  
AA GAYA!



HIGHEST ARAI  
TESTED MILEAGE  
OF 15.1 KMPL<sup>#</sup>



LARGEST  
LOADING AREA  
61 SQFT (5.7SQM)



LONGEST  
LOAD BODY  
10FT 8 INCH  
(3250MM)



BEST IN  
INDUSTRY WARRANTY\*  
5 YEARS, 2 LAKH KM

BADA  
DOST i6



HINDUJA GROUP

\*T&C apply. Biggest Pickup due to highest payload and largest loading area in the 3.5 to 4.5 Ton GVW segment.  
# T&C apply. Under Standard test condition ARAI tested Mileage

TECHNICAL SPECIFICATIONS	Bada Dost i6
Engine	
Type	1.5L, 3 Cylinder Diesel Engine (BS VI) Turbo Charged Intercooled
Max Power	59 Kw (80hp) @ 3300 rpm
Max Torque	190Nm @ 1600 to 2400 rpm
Displacement	1478 cc
Clutch	
Type	Diaphragm, Single Dry Plate, Pot Type, Mechanical Cable Operated
Gearbox	
Type/No. of Gears	Fully Synchromesh, 5 - Speed Manual Gear Box , Reverse with Sliding Mesh
Braking system	
Type	Vacuum Assisted Hydraulic Brakes with LSPV
Front	Ventilated Disc Type
Rear	Drum Type
Suspension	
Front	Rigid front Suspension (5 leaf) with Anti-roll Bar
Rear	Semi Elliptic Leaf suspension (8 Leaf)
Tyres	
Size/Type	215/75 R15 LT
Cabin	
Seating Capacity	Driver +1
Steering	Power Steering
Fuel Tank (L)	
Capacity	50 Litres
Weight (kg)	
Gross Vehicle Weight	4100
Rated Payload	2567 (CBC), 2355(FSD)
Dimensions(mm)	
Overall Width	1842
Overall Length	5325
Overall Height	2048
Wheelbase	2740
Loading Platform Height	932
Turning Circle Radius	5950
Load body (LxBxH)	3250X 1750 X 490 mm, 10ft 8in x 5ft 9in x 1ft 7in

## COLOURS

Ultra Blue

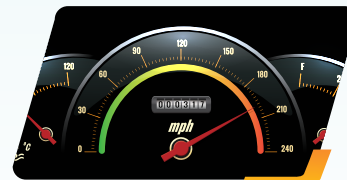
Stable Grey

Casablanca White

Irish Cream

Golden Brown

## AUTHORISED DEALER



#Highest Fuel Mileage  
15.13kmpl



Best in class TCD 11.9m



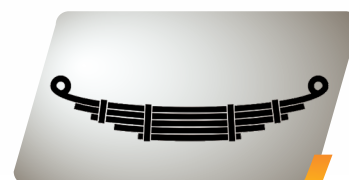
Anti-roll Bar for safety



First In Class in built Central Door  
Locking Feature



Cabin Comfort



Advanced Suspension  
5 Front & 8 Rear



5 YEARS, 2 LAKH KM WARRANTY



UPTIME GUARANTEE

For further details, please contact:  
1800 1022 666 (toll free)  
www.ashokleyland.com

Or write to us at:  
**Ashok Leyland Limited,**  
6th Floor - LCV Marketing,  
No.1 Sardar Patel Road,  
Guindy, Chennai - 600 032.  
Tel: (044) 22206000

\*Terms & Conditions Apply.  
\*Disclaimer: Accessories shown are not part of the standard equipment. The illustrations are only indicative and may vary from the actual vehicle. Ashok Leyland reserves the right to alter the technical specifications/ designs without prior notice and without liability, in view of our policy of continuously improving our products. 5 years or 2 lakh km warranty, whichever is earlier – 2 years or 1 lakh km whichever is earlier is provided by the manufacturer, followed by 36 months of extended warranty by 3rd party if the 2 lakh km has not been clocked by the vehicle in the first 2 years. October 2025 E & O.E.  
\*Mileage is under standard test conditions. \*\*Super Earnings are due to higher payload and better mileage savings under standard operating conditions.